

**TOWN OF DENTON  
4 N. 2<sup>nd</sup> STREET, DENTON, MD 21629**

## **CROUSE PARK BULKHEAD RENOVATION**

### **ADDENDUM 02**

February 6, 2026

### **PURPOSE**

Please be advised that the Town of Denton has issued an addendum for the Crouse Park Bulkhead Renovation project.

The bid due date remains Friday, February 13<sup>th</sup>, 2026, at 2:00pm.

The attention of prospective bidders is directed to the following revisions, additions, and/or deletions to the Bid Documents. The bidder is responsible for notifying their Subcontractors regarding items covered by all Addenda.

### **QUESTIONS RECEIVED & RESPONSES**

1. **Question:** The answer to Question 13 in ADDENDUM 01 makes clear that the contractor is responsible for replacing any trees that they remove. However, SHEET NO. S1.1 indicates that the three trees between the bulkhead and the parking lot are to be removed. Is the contractor to remove and replace these trees?

**Response:** The Town's preference is to leave the trees marked "To Be Removed" on Sheet 1.1 in place. However, if they need to be removed for installation of either the bulkhead or proposed boardwalk, it will be the contractor's responsibility to remove and replace the trees in coordination with the Town for the specific replacement location.

2. **Question:** Are the 10' long boardwalk piles in TYPICAL BULKHEAD SECTION @ BOARDWALK on SHEET NO. S2.1 also CLASS B 2.5 CCA?

**Response:** These piles can be 10" diameter and treated to 1.0 CCA or greater

3. **Question:** The existing bulkhead piles are not evenly spaced along the existing bulkhead. Some adjacent piles are 7' apart, others 6', and still others less than 6'. As such, please confirm that the new bulkhead piles are to "MATCH EXISTING PILE

LOCATIONS” as indicated in TYPICAL BULKHEAD ELEVATION on SHEET NO. S2.1.

**Response:** Since the design includes utilizing the existing tie rods the spacing will have to match the existing, variations are permissible if possible to make them more uniform.

4. **Question:** Is the contractor to remove and reinstall the existing benches as needed?

**Response:** Yes.

5. **Question:** Is the existing concrete deadman continuous or segmented?

**Response:** Per the previous drawings (attached) the dead man is continuous. The Town dug up one of the tie rods back at the deadman prior to bid and confirmed it was a timber deadman at that location. For reference and consideration, they encountered significant stone backfill while exposing the existing tie rod and deadman.

6. **Question:** Are there any “as-built” drawings for the portion of the existing bulkhead to be replaced in-location?

**Response:** Crouse Park Existing Drawings are included in the addendum for reference.

7. **Question:** Both bulkhead section drawings on SHEET NO. S2.1 instruct the contractor to “EXPOSE EXISTING TIE ROD CONNECTION AT (5) LOCATIONS AND COORDINATE REVIEW BY ENGINEER”. What is the course of action if the engineer determines that one or more of these connections is deficient, and is this to be included in the bid price?

**Response:** The Town dug up one of the tie rods back at the deadman prior to bid and confirmed it was a timber deadman at that location. The portion of rod that was exposed appeared to be in sound enough condition for utilization with the new bulkhead. However we want to confirm that is the case. If other conditions are found at any of the (5) locations we would coordinate other options with the contractor. The anticipation of that that related cost is not to be included in bid price. For reference and consideration, they encountered significant stone backfill while exposing the existing tie rod and deadman.

8. **Question:** Do prevailing wages apply to this work?

**Response:** Prevailing wage requirements do not apply to this bid based on the project’s current scope and anticipated contract value.

9. **Question:** Which Spec. documents will be used for this project? Some of the specs in the MDE permit do not match the specs in the three large format drawings.

**Response:** All technical specifications on the large drawings such as vinyl sheet size should be used for bid. The MDE conditions and requirements should be followed.

10. **Question:** Do the construction specs/drawings in the MDE permit supersede the three large format 2x3 drawings?

**Response:** No.

11. Question: The specs ask for square 3"x3" washers. May 3 1/4" new York dock washers be used as substitutes?

**Response: No, note washer is stainless steel.**

12. Question: MDE permit requires Everlast 7.1 vinyl sheet pile on Typical bulkhead section new bulkhead 18" waterward of existing (page 3 of 4). Large format 2x3 (page S2.1) Typical bulkhead section @ bulkhead requires Everlast 8.5 vinyl sheet pile. Which will be used in this project?

**Response: See response above.**

13. Question: May ShoreGuard SG-625 be substituted for the vinyl sheet pile in either the MDE permit or the large format 2x3 construction sheets?

**Response: No.**

14. Question: May Everlast ESP 7.1 Vinyl Sheet Pile be substituted for the sheet piles in either the MDE permit or the large format 2x3 construction plans?

**Response: No.**

15. Question: May 2"x8" decking be used in place of the 2"x6" decking?

**Response: No.**

16. Question: May ShoreGuard SG-750 Vinyl Sheet Pile be substituted for the sheet piles in either the MDE permit or the large format 2x3 construction plans?

**Response: Yes.**

17. Question: What is the spacing on the 10' long boardwalk piles?

**Response: 7 feet on center.**

## **REVISIONS**

1. None.

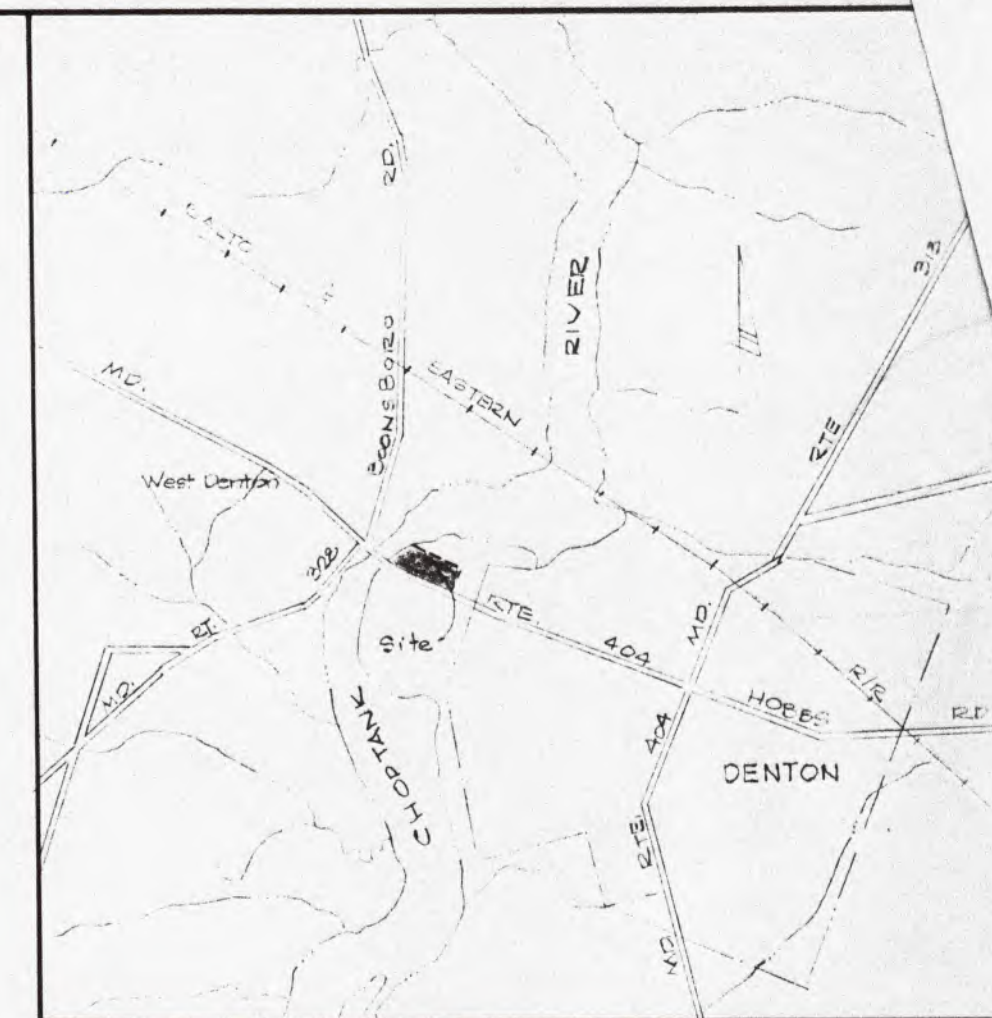
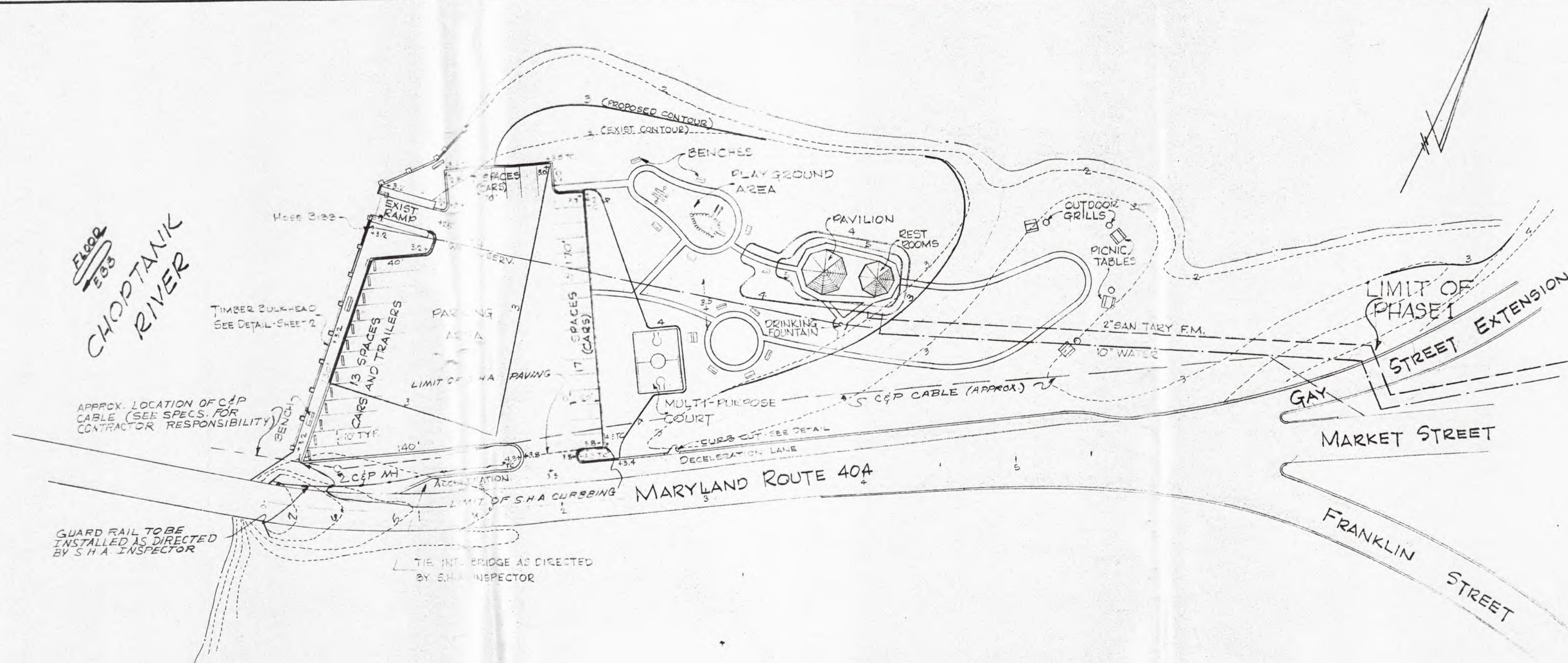
## **ATTACHMENTS**

The following documents are included as attachments to this addendum.

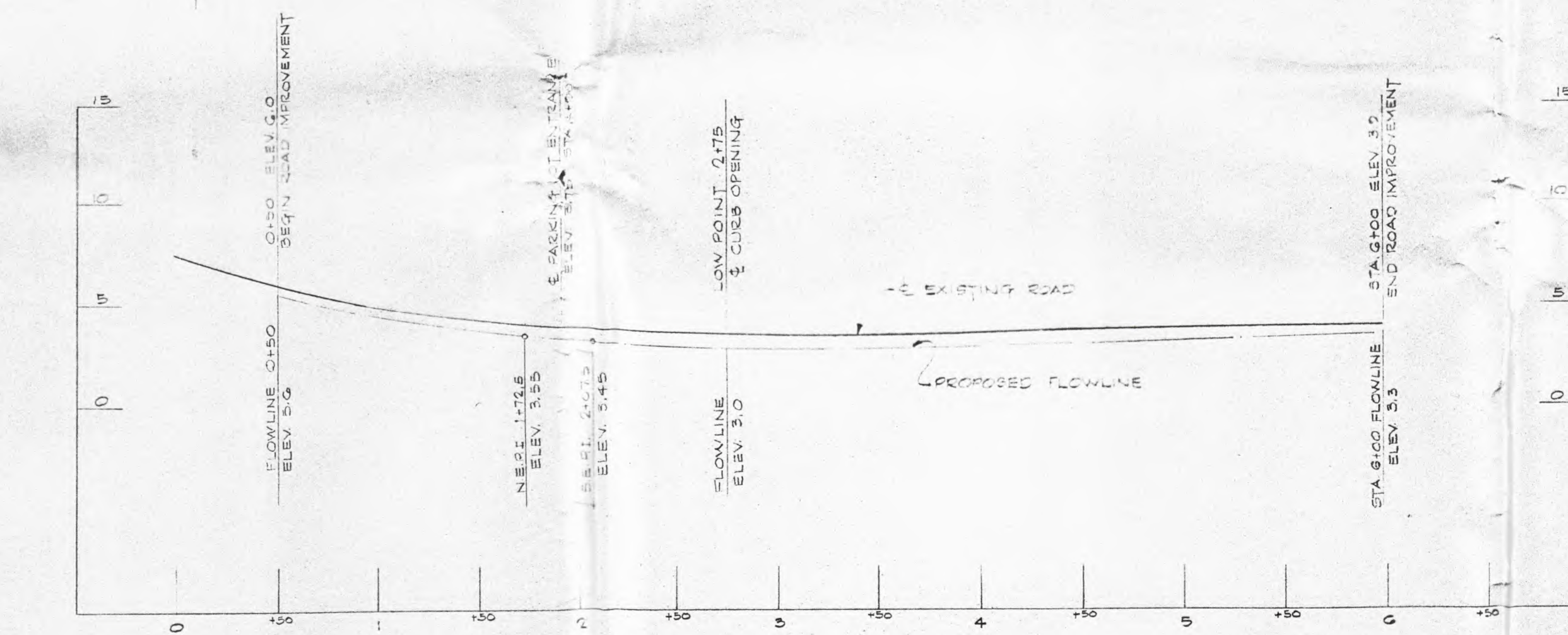
1. Crouse Park Existing Drawings (for reference).

**\* END OF ADDENDUM NO. 2 \***



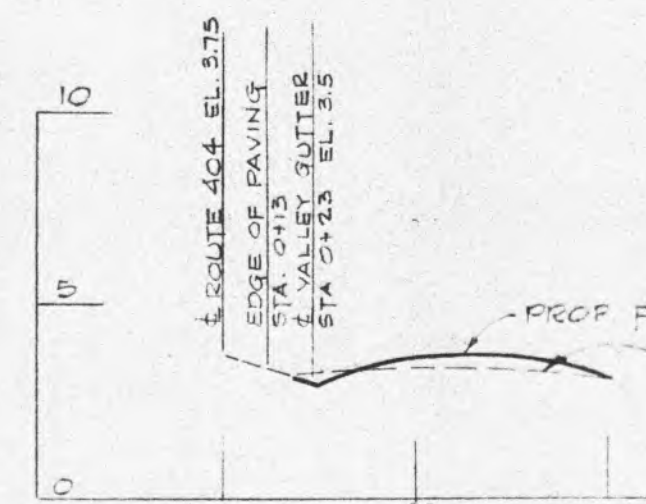


LOCATION MAP  
1" = 2000'



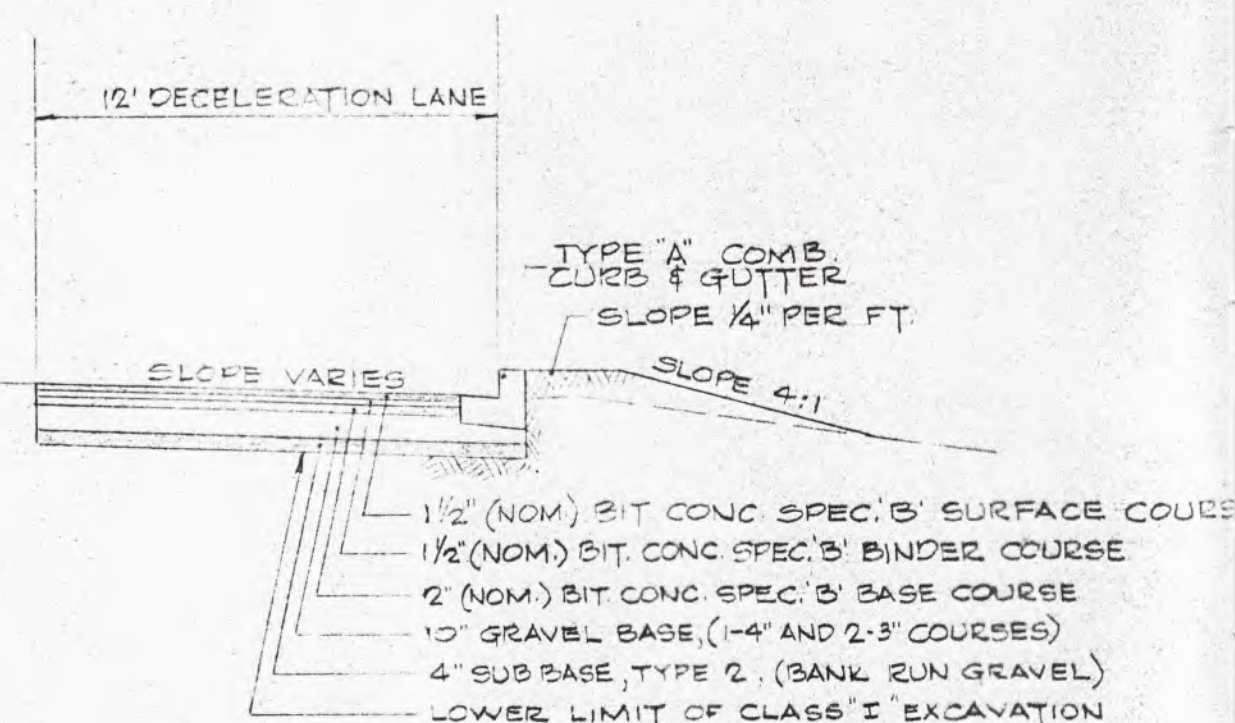
PROFILE - MARYLAND ROUTE 404

SCALE: HORIZ. 1"=50'  
VERT. 1"=5'

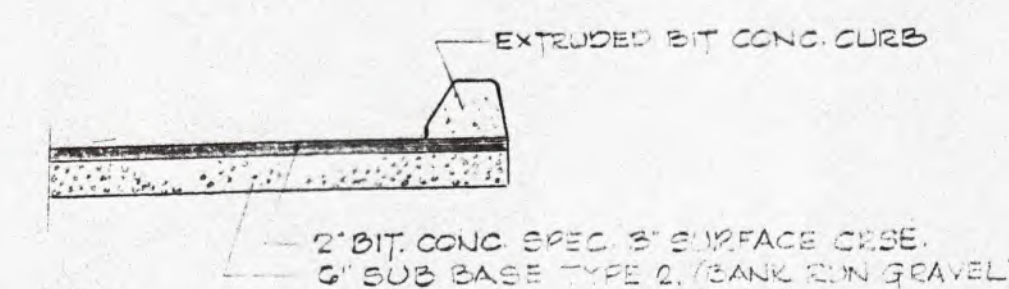


PROFILE - PARK ENTRANCE  
@ MD. RTE. 404 STA. 1+00

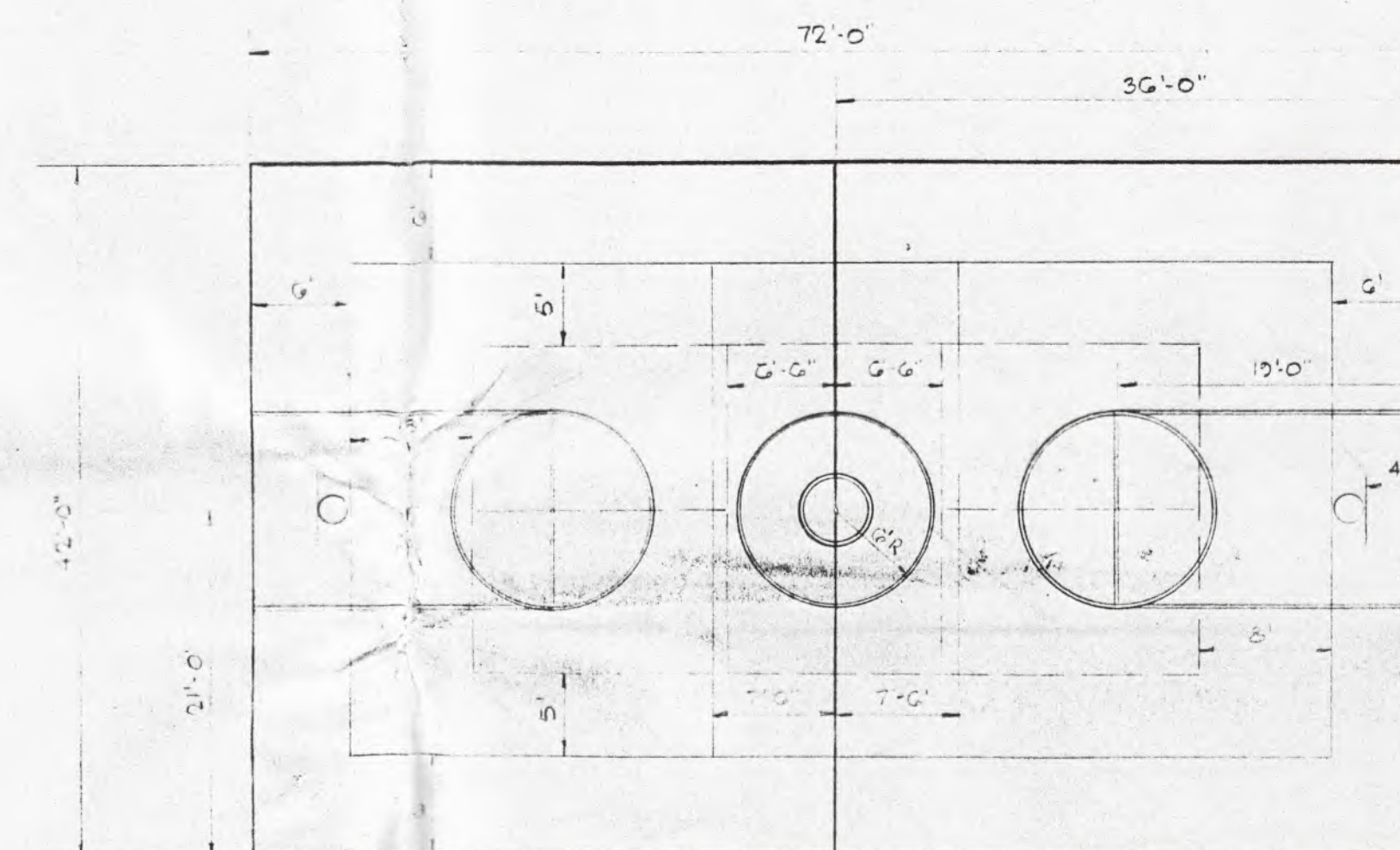
SCALE: HORIZ. 1"=50'  
VERT. 1"=5'



DETAIL - ROAD WIDENING  
SCALE: 1"=1'



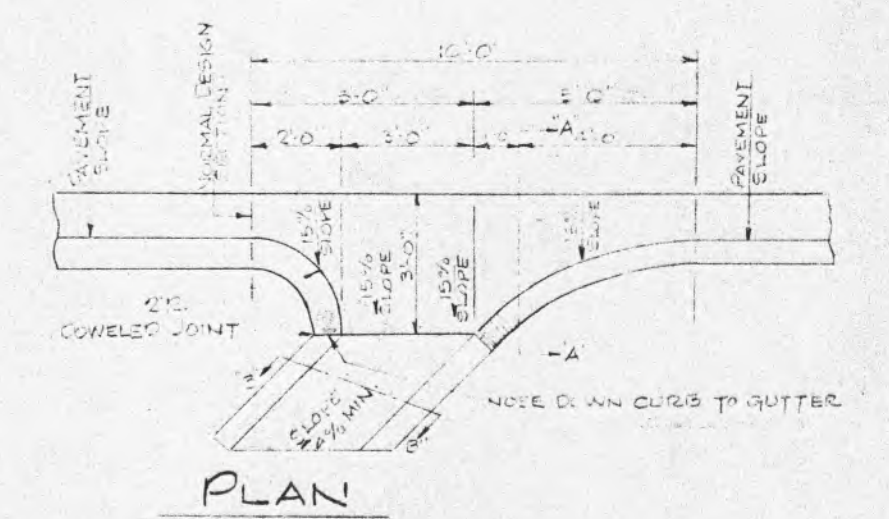
DETAIL - PARKING LOT PAVING  
NO SCALE



MULTI-PURPOSE COURT

SCALE: 1"=10'-0"

NOTE: SOLID LINE - VOLLEYBALL COURT  
DASHED LINE - BADMINTON COURT  
DOUBLE LINE - BASKETBALL COURT



PLAN

SECTION A-A

SECTION B-B

CURB CUT DETAIL @ STA. 2+75

REVISED: 2-6-75 REVISED: 10-5-74

<p>COMMISSIONERS OF DENTON</p> <p>APPROVED _____ DATE _____</p>	<p>Scale AS SHOWN</p> <p>Drawn By V.C. GROWN</p> <p>Sheet 1 of 5</p>	<p>Date 8-1-74</p> <p>Designed By R.R.</p> <p>Job No. 121</p>	<p><b>FREDERICK WARD ASSOCIATES, INC.</b> BEL AIR, MARYLAND</p>	<p>• ENGINEERS • PLANNERS • LANDSCAPE ARCHITECTS</p>	<p>CONSTRUCTION PLAN <b>DANIEL CROOKE MEMORIAL PARK</b> PHASE I TOWN OF DENTON CAROLINE COUNTY, MARYLAND</p>
---	--	---	---	--	--



Fls 202  
203  
CHOPTANK RIVER

HOSE B185 TO BE CONSTRUCTED AS TO EXTEND TO 2'-0" ABOVE FINISHED GRADE AND STRAPPED TO 4"x4" GUARD POST (TREATED)

TIMBER BULKHEAD SEE DETAIL SHEET 4

EXIST. RAMP

13 SPACES AND TRAILERS

17 SPACES (CARS)

OPTIONAL CONT. ENCLOS.

SALE SENSER

PLAY GROUND AREA

PAVILION

BEST ROOMS

OUTDOOR GRILLS

PICNIC TABLES

DRINKING FOUNTAIN

FOR CONNECTION LAYOUT SEE DETAIL "A" THIS SHEET

2" FORCE MAIN

10" WATER MAIN

2" STEEL SLEEVE SEE DETAIL THIS SHEET

8" STEEL SLEEVE

10" W.M.

2" SAN. F.M.

10" W.M.

15' SAN. EX. INV. 19.57

INV. 20.45

2" FORCE MAIN

10" WATER MAIN

2" SAN. FORCE MAIN

10" WATER MAIN

2" STEEL SLEEVE CASING

22" STEEL SLEEVES

3.5 MIN. COVER

3.0 MIN. COVER

3.0 MIN. COVER

3.5 MIN. COVER

2" SAN. FORCE MAIN

10" WATER MAIN

22" STEEL SLEEVE CASING

22" STEEL SLEEVES

3.5 MIN. COVER

3.0 MIN. COVER

3.0 MIN. COVER

3.5 MIN. COVER

2" SAN. FORCE MAIN

10" WATER MAIN

22" STEEL SLEEVE CASING

22" STEEL SLEEVES

3.5 MIN. COVER

3.0 MIN. COVER

3.0 MIN. COVER

3.5 MIN. COVER

2" SAN. FORCE MAIN

10" WATER MAIN

22" STEEL SLEEVE CASING

22" STEEL SLEEVES

3.5 MIN. COVER

3.0 MIN. COVER

3.0 MIN. COVER

3.5 MIN. COVER

2" SAN. FORCE MAIN

10" WATER MAIN

22" STEEL SLEEVE CASING

22" STEEL SLEEVES

3.5 MIN. COVER

3.0 MIN. COVER

3.0 MIN. COVER

3.5 MIN. COVER

2" SAN. FORCE MAIN

10" WATER MAIN

22" STEEL SLEEVE CASING

22" STEEL SLEEVES

3.5 MIN. COVER

3.0 MIN. COVER

3.0 MIN. COVER

3.5 MIN. COVER

2" SAN. FORCE MAIN

10" WATER MAIN

22" STEEL SLEEVE CASING

22" STEEL SLEEVES

3.5 MIN. COVER

3.0 MIN. COVER

3.0 MIN. COVER

3.5 MIN. COVER

2" SAN. FORCE MAIN

10" WATER MAIN

22" STEEL SLEEVE CASING

22" STEEL SLEEVES

3.5 MIN. COVER

3.0 MIN. COVER

3.0 MIN. COVER

3.5 MIN. COVER

2" SAN. FORCE MAIN

10" WATER MAIN

22" STEEL SLEEVE CASING

22" STEEL SLEEVES

3.5 MIN. COVER

3.0 MIN. COVER

3.0 MIN. COVER

3.5 MIN. COVER

2" SAN. FORCE MAIN

10" WATER MAIN

22" STEEL SLEEVE CASING

22" STEEL SLEEVES

3.5 MIN. COVER

3.0 MIN. COVER

3.0 MIN. COVER

3.5 MIN. COVER

2" SAN. FORCE MAIN

10" WATER MAIN

22" STEEL SLEEVE CASING

22" STEEL SLEEVES

3.5 MIN. COVER

3.0 MIN. COVER

3.0 MIN. COVER

3.5 MIN. COVER

2" SAN. FORCE MAIN

10" WATER MAIN

22" STEEL SLEEVE CASING

22" STEEL SLEEVES

3.5 MIN. COVER

3.0 MIN. COVER

3.0 MIN. COVER

3.5 MIN. COVER

2" SAN. FORCE MAIN

10" WATER MAIN

22" STEEL SLEEVE CASING

22" STEEL SLEEVES

3.5 MIN. COVER

3.0 MIN. COVER

3.0 MIN. COVER

3.5 MIN. COVER

2" SAN. FORCE MAIN

10" WATER MAIN

22" STEEL SLEEVE CASING

22" STEEL SLEEVES

3.5 MIN. COVER

3.0 MIN. COVER

3.0 MIN. COVER

3.5 MIN. COVER

2" SAN. FORCE MAIN

10" WATER MAIN

22" STEEL SLEEVE CASING

22" STEEL SLEEVES

3.5 MIN. COVER

3.0 MIN. COVER

3.0 MIN. COVER

3.5 MIN. COVER

2" SAN. FORCE MAIN

10" WATER MAIN

22" STEEL SLEEVE CASING

22" STEEL SLEEVES

3.5 MIN. COVER

3.0 MIN. COVER

3.0 MIN. COVER

3.5 MIN. COVER

2" SAN. FORCE MAIN

10" WATER MAIN

22" STEEL SLEEVE CASING

22" STEEL SLEEVES

3.5 MIN. COVER

3.0 MIN. COVER

3.0 MIN. COVER

3.5 MIN. COVER

2" SAN. FORCE MAIN

10" WATER MAIN

22" STEEL SLEEVE CASING

22" STEEL SLEEVES

3.5 MIN. COVER

3.0 MIN. COVER

3.0 MIN. COVER

3.5 MIN. COVER

2" SAN. FORCE MAIN

10" WATER MAIN

22" STEEL SLEEVE CASING

22" STEEL SLEEVES

3.5 MIN. COVER

3.0 MIN. COVER

3.0 MIN. COVER

3.5 MIN. COVER

2" SAN. FORCE MAIN

10" WATER MAIN

22" STEEL SLEEVE CASING

22" STEEL SLEEVES

3.5 MIN. COVER

3.0 MIN. COVER

3.0 MIN. COVER

3.5 MIN. COVER

2" SAN. FORCE MAIN

10" WATER MAIN

22" STEEL SLEEVE CASING

22" STEEL SLEEVES

3.5 MIN. COVER

3.0 MIN. COVER

3.0 MIN. COVER

3.5 MIN. COVER

2" SAN. FORCE MAIN

10" WATER MAIN

22" STEEL SLEEVE CASING

22" STEEL SLEEVES

3.5 MIN. COVER

3.0 MIN. COVER

3.0 MIN. COVER

3.5 MIN. COVER

2" SAN. FORCE MAIN

10" WATER MAIN

22" STEEL SLEEVE CASING

22" STEEL SLEEVES

3.5 MIN. COVER

3.0 MIN. COVER

3.0 MIN. COVER

3.5 MIN. COVER

2" SAN. FORCE MAIN

10" WATER MAIN

22" STEEL SLEEVE CASING

22" STEEL SLEEVES

3.5 MIN. COVER

3.0 MIN. COVER

3.0 MIN. COVER

3.5 MIN. COVER

2" SAN. FORCE MAIN

10" WATER MAIN

22" STEEL SLEEVE CASING

22" STEEL SLEEVES

3.5 MIN. COVER

3.0 MIN. COVER

3.0 MIN. COVER

3.5 MIN. COVER

2" SAN. FORCE MAIN

10" WATER MAIN

22" STEEL SLEEVE CASING

22" STEEL SLEEVES

3.5 MIN. COVER

3.0 MIN. COVER

3.0 MIN. COVER

3.5 MIN. COVER

2" SAN. FORCE MAIN

10" WATER MAIN

22" STEEL SLEEVE CASING

22" STEEL SLEEVES

3.5 MIN. COVER

3.0 MIN. COVER

3.0 MIN. COVER

3.5 MIN. COVER

2" SAN. FORCE MAIN

10" WATER MAIN

22" STEEL SLEEVE CASING

22" STEEL SLEEVES

3.5 MIN. COVER

3.0 MIN. COVER

3.0 MIN. COVER

3.5 MIN. COVER

2" SAN. FORCE MAIN

10" WATER MAIN

22" STEEL SLEEVE CASING

22" STEEL SLEEVES

3.5 MIN. COVER

3.0 MIN. COVER

3.0 MIN. COVER

3.5 MIN. COVER

2" SAN. FORCE MAIN

10" WATER MAIN

22" STEEL SLEEVE CASING

22" STEEL SLEEVES

3.5 MIN. COVER

3.0 MIN. COVER

3.0 MIN. COVER

3.5 MIN. COVER

2" SAN. FORCE MAIN

10" WATER MAIN

22" STEEL SLEEVE CASING

22" STEEL SLEEVES

3.5 MIN. COVER

3.0 MIN. COVER

3.0 MIN. COVER

3.5 MIN. COVER

2" SAN. FORCE MAIN

10" WATER MAIN

22" STEEL SLEEVE CASING

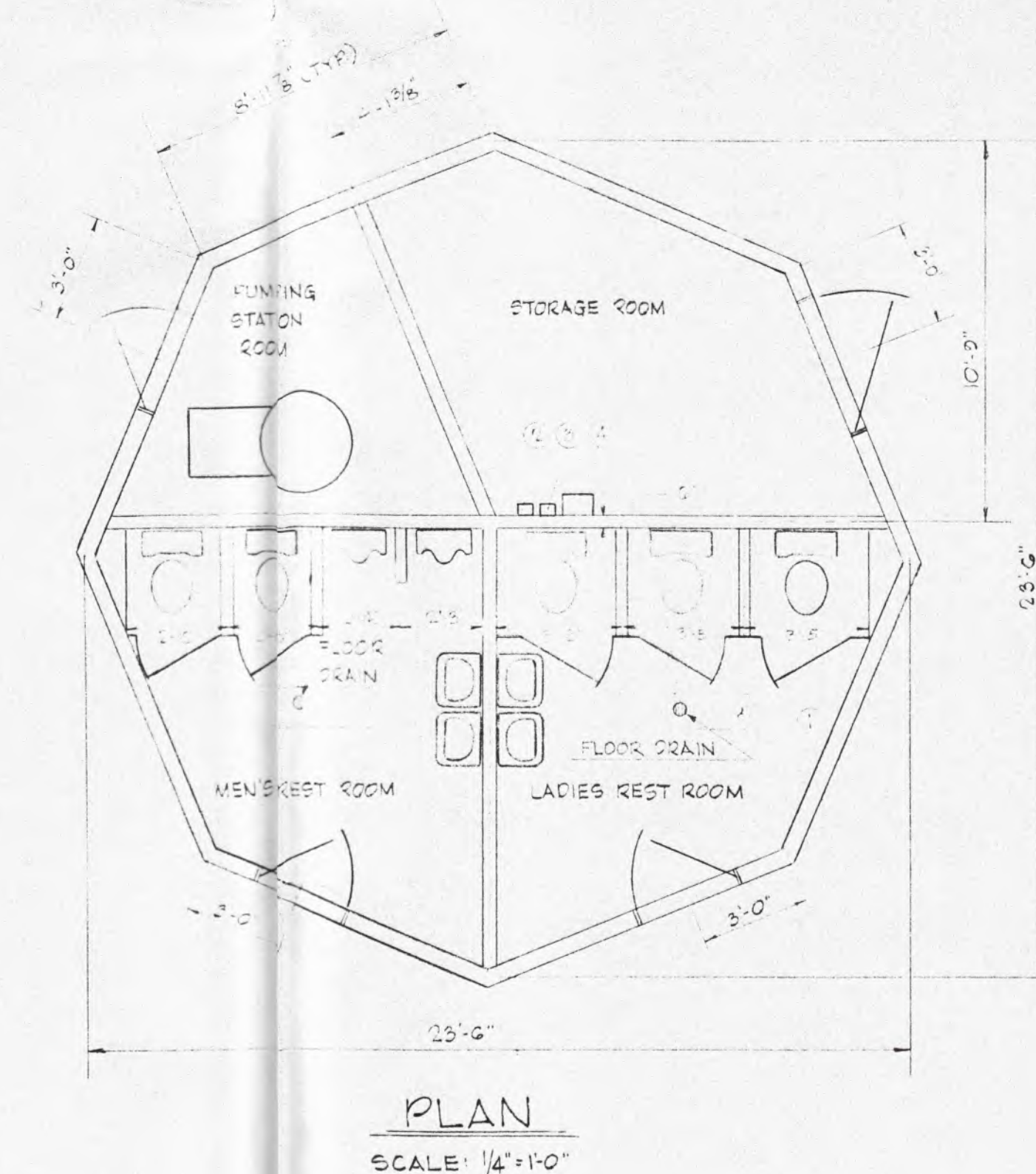
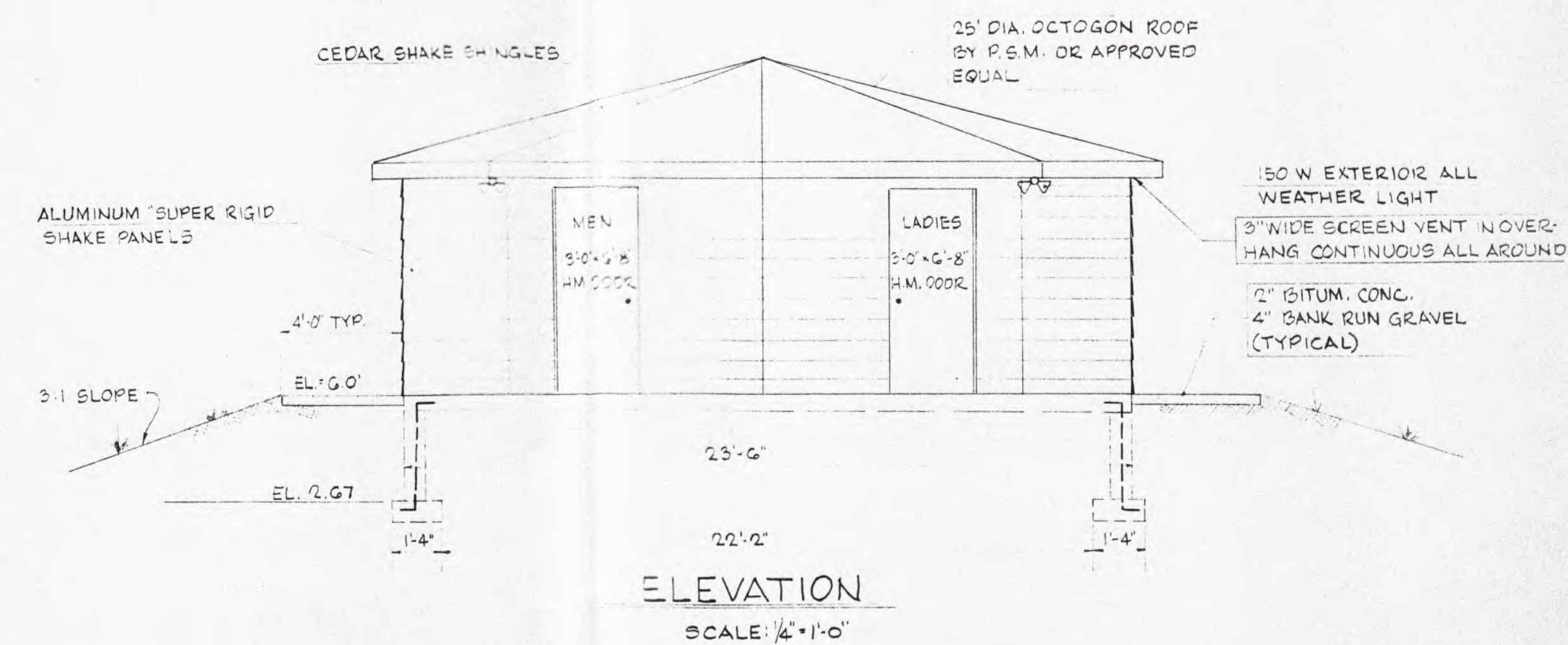
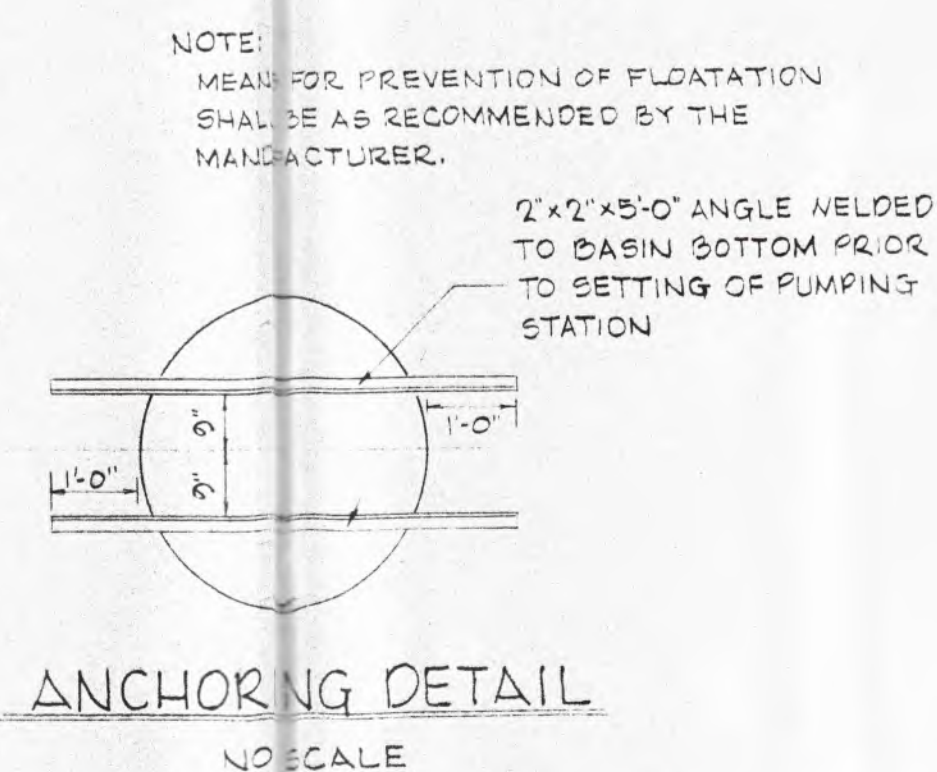
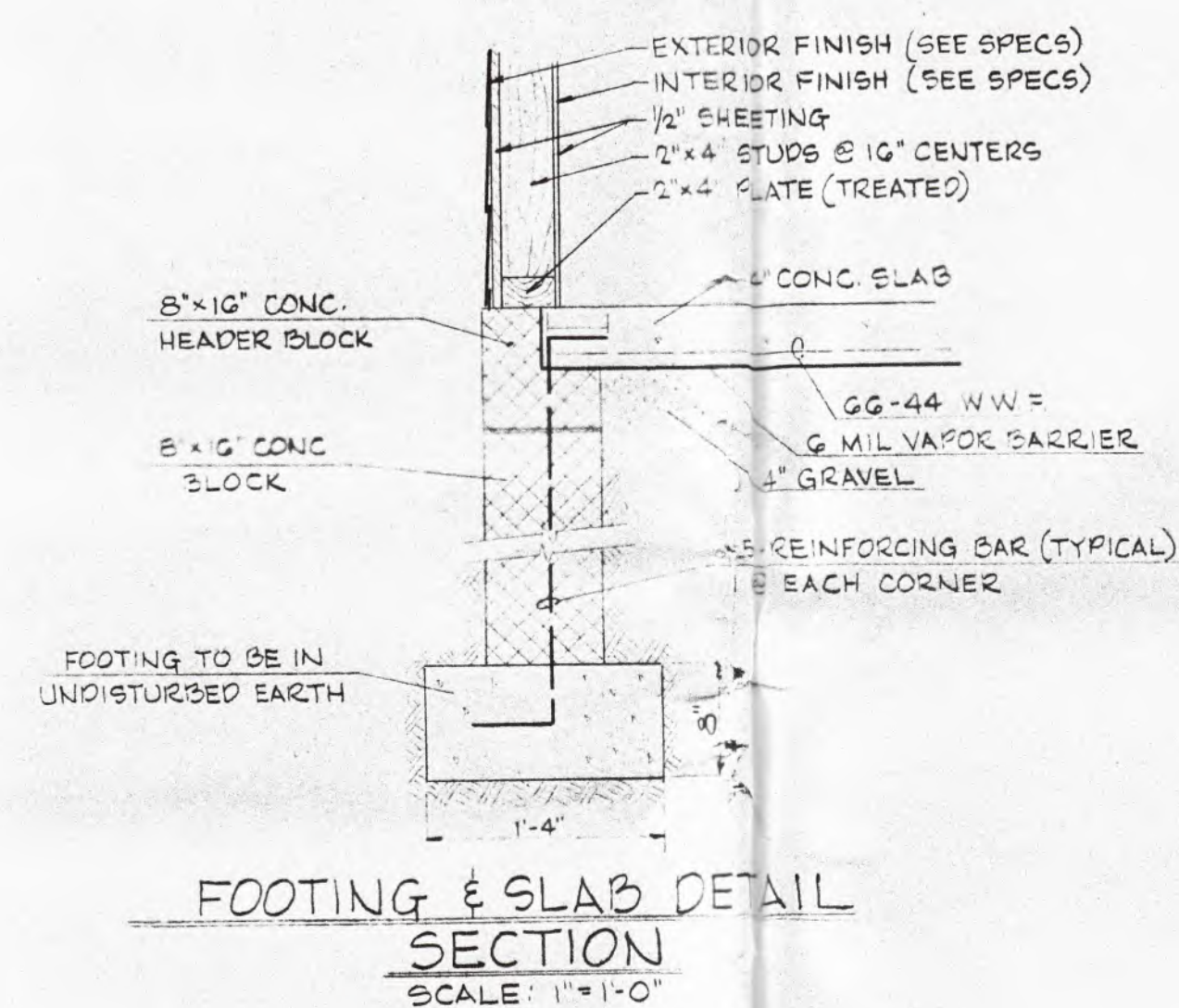
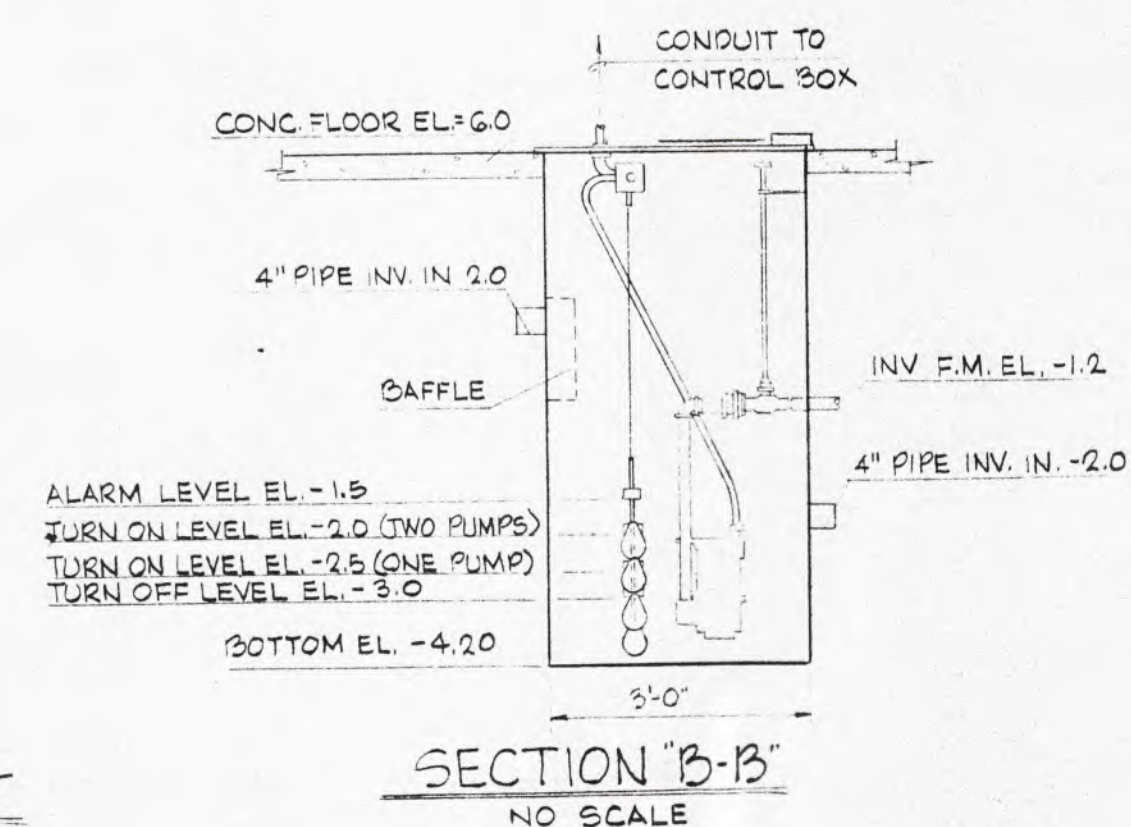
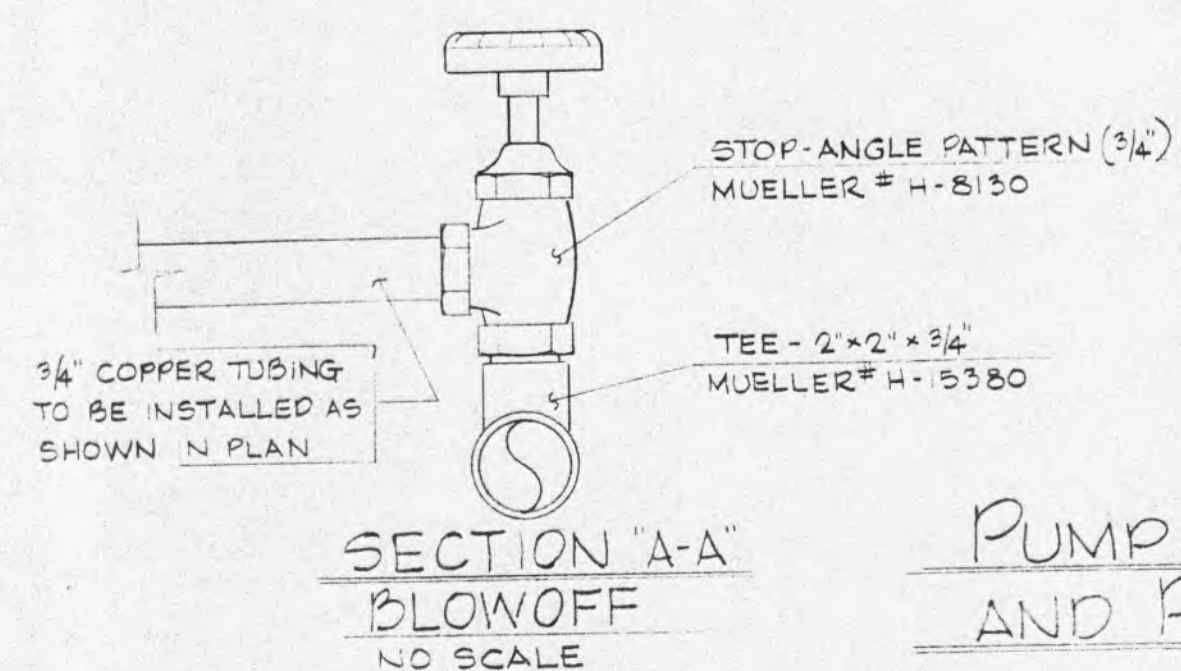
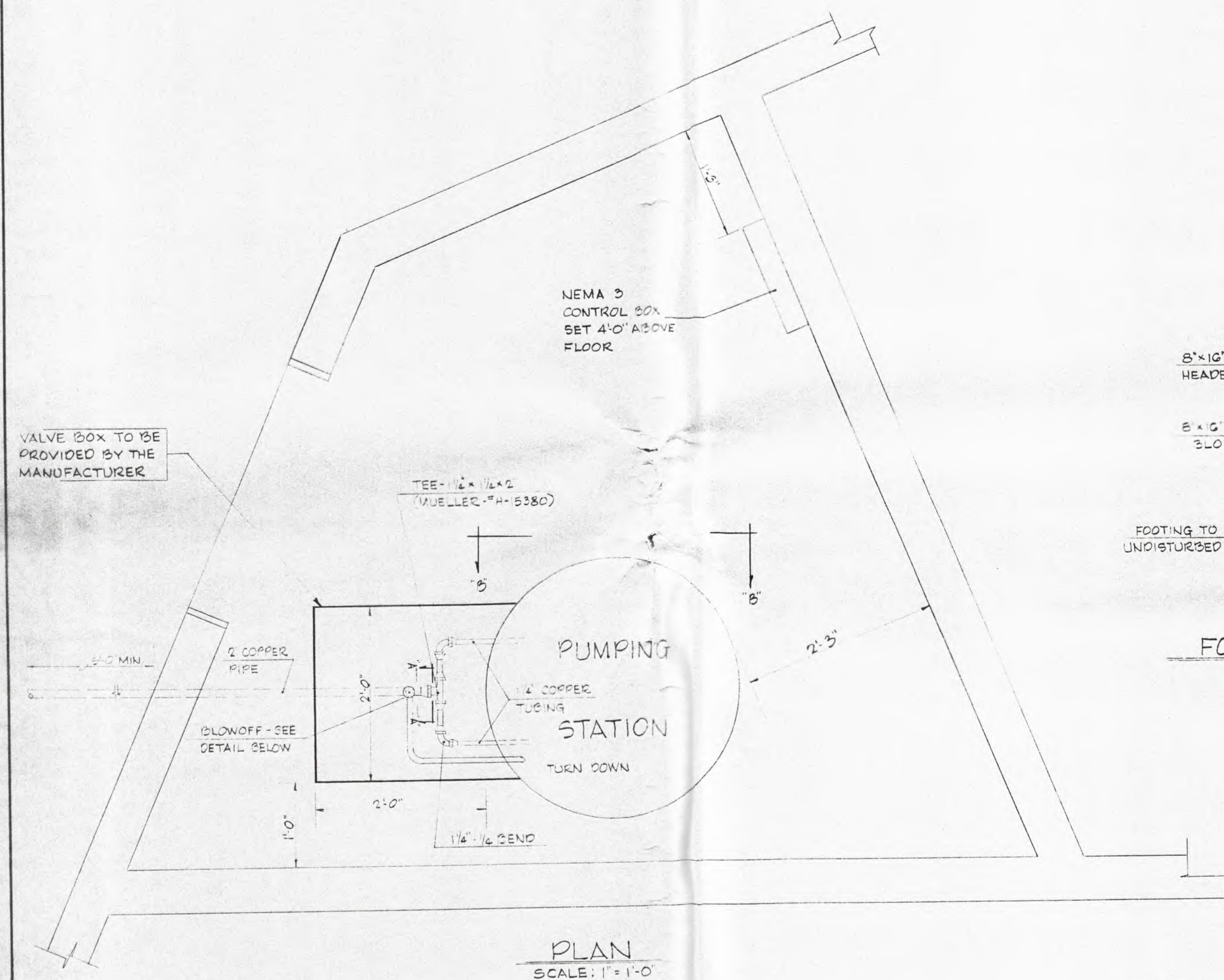
22" STEEL SLEEVES

3.5 MIN. COVER

3.0 MIN. COVER

3.0 MIN





COMMISSIONERS OF DENTON

APPROVED

DATE \_\_\_\_\_

Scale  
AS SHOWN

Drawn By  
YAN

Sheet 3 of 5

Date  
3.25.75

Designed By	P.R.H.
-------------	--------

Job No.	121
---------	-----



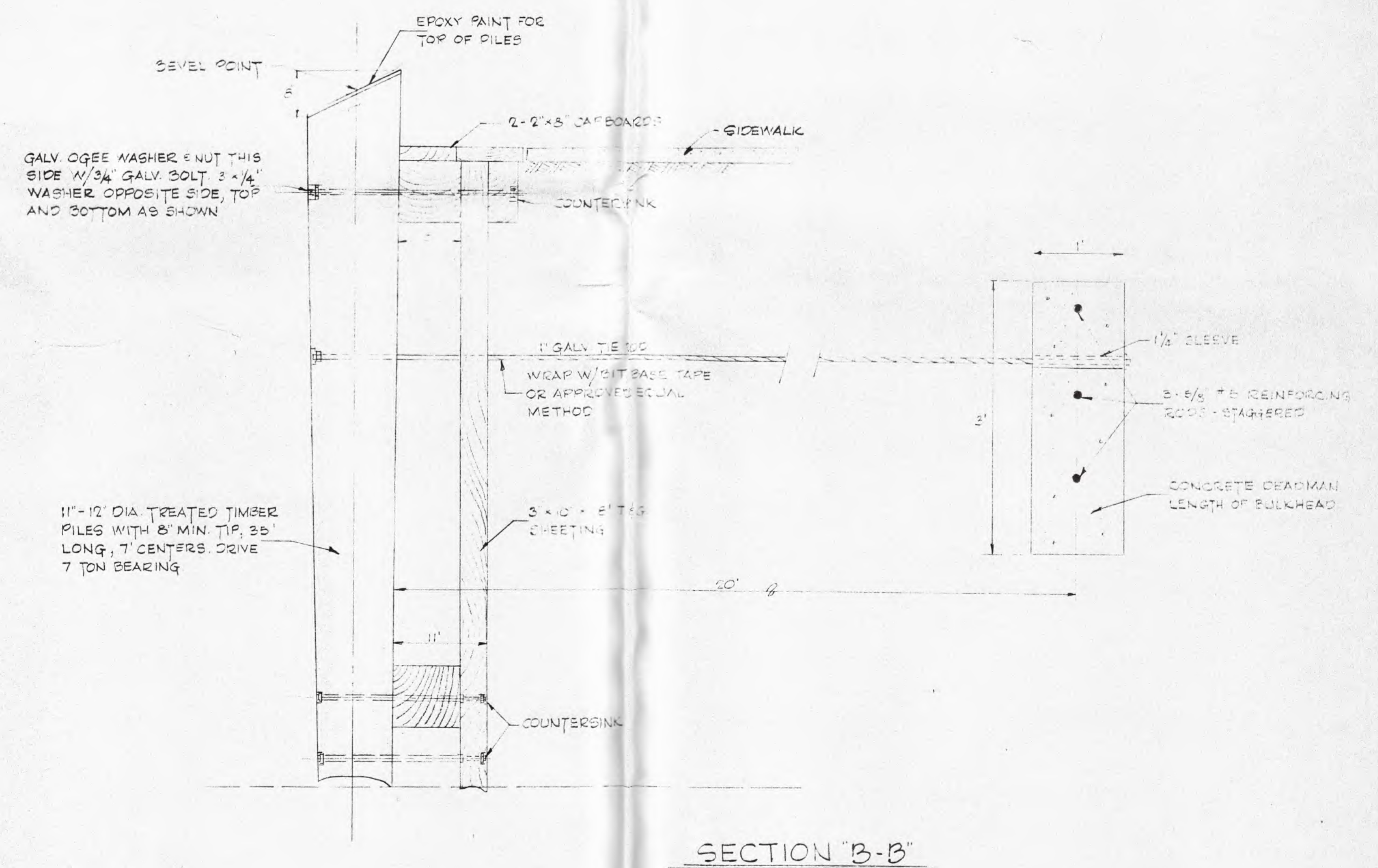
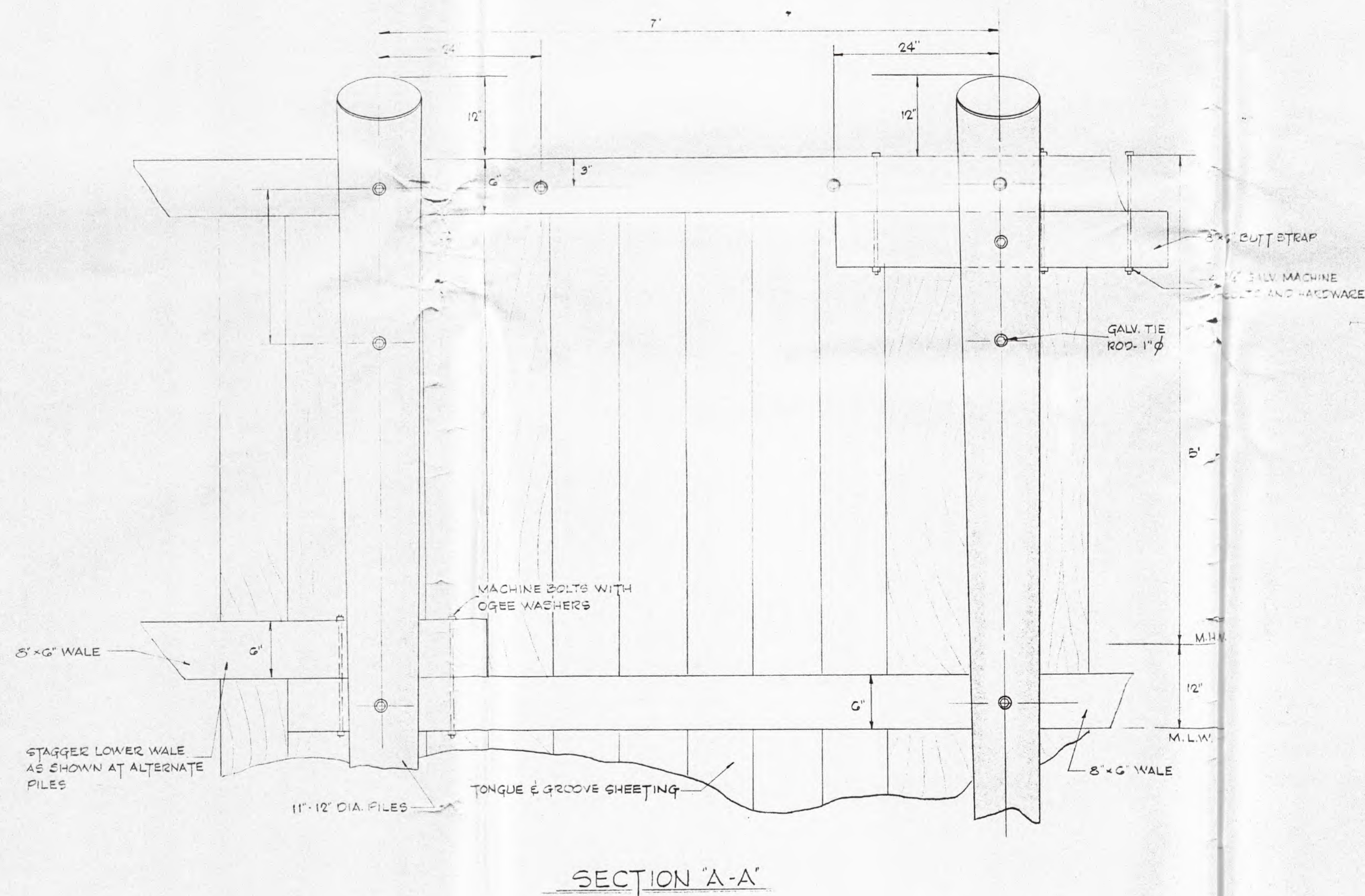
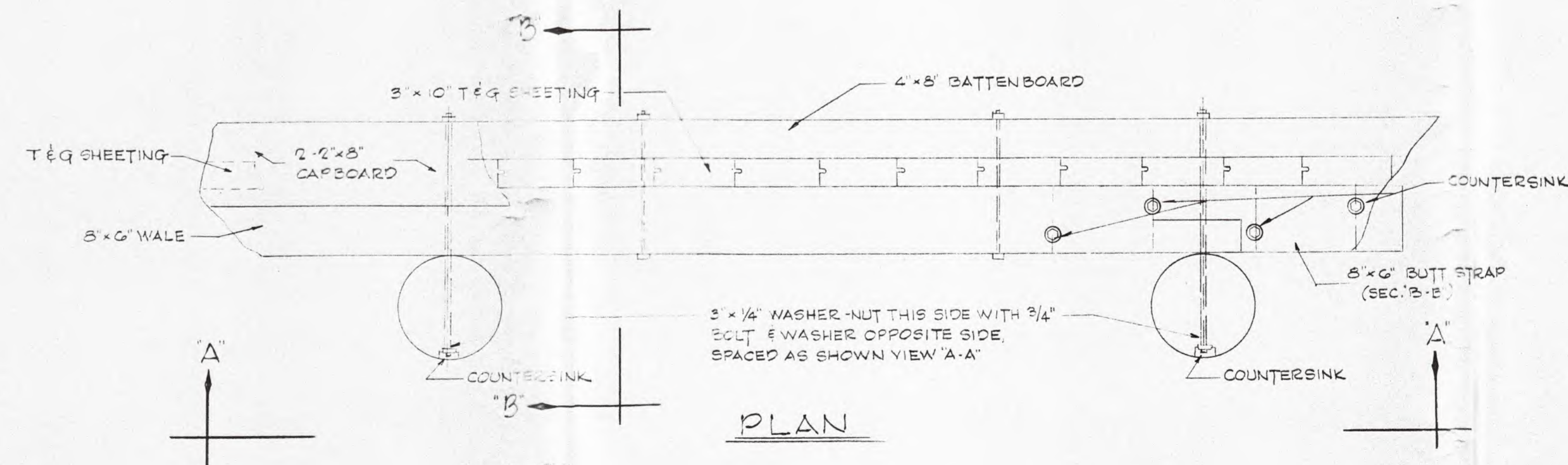
**FREDERICK WARD ASSOCIATES, INC**  
BEL AIR, MARYLAND

BEL AIR, MARYLAND

- ENGINEERS
- PLANNERS
- LANDSCAPE ARCHITECTS

CONSTRUCTION PLAN  
RESTROOM FACILITIES  
DANIEL CROUSE MEMORIAL PARK  
TOWN OF DENTON, MARYLAND





COMMISSIONERS OF DENTON

APPROVED DATE

Scale  
1" = 1'-0"Drawn By  
V.C. BROWNJob No.  
121Date  
8-1-74Designed By  
R.R.Job No.  
121FREDERICK WARD ASSOCIATES, INC.  
BEL AIR, MARYLAND• ENGINEERS  
• PLANNERS  
• LANDSCAPE ARCHITECTS

CONSTRUCTION PLAN  
**TIMBER BULKHEAD**  
 DANIEL CROUSE MEMORIAL PARK  
 DENTON, MARYLAND



