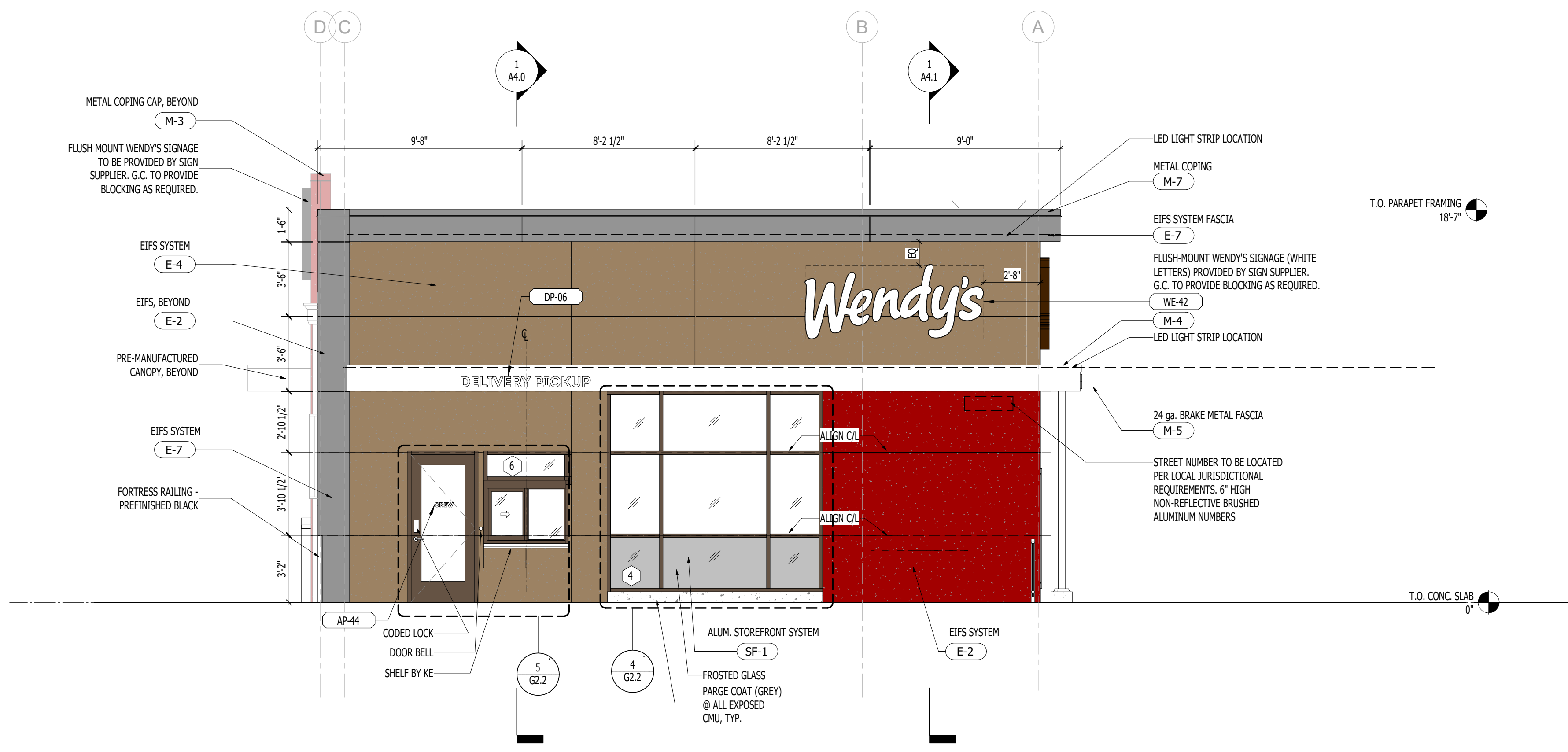
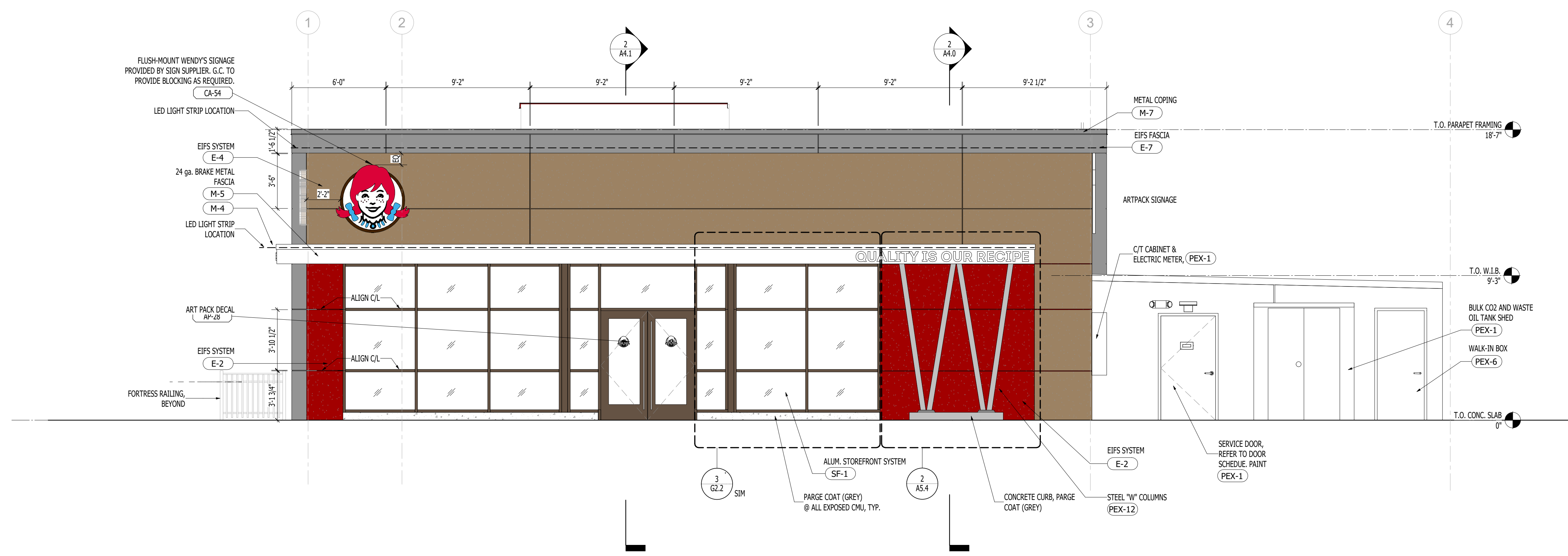




1/8/2025 10:26:00 PM Z:\Shared\Public\WENDYS\24-xx-Flynn 14520 Denton, MD (GNG40).dwt



2 ELEVATION- EXTERIOR- PICK UP  
1/4" = 1'-0"



1 ELEVATION- EXTERIOR- ENTRY  
1/4" = 1'-0"

**GENERAL NOTES - EXTERIOR ELEVATIONS**

- A. REFER TO SHEET A6.0 AND A6.1 FOR DOOR AND WINDOW DETAILS.
- B. SIGNAGE TO BE SUBMITTED UNDER SEPARATE PERMIT, SEPARATE COVER, SHOWN FOR DESIGN INTENT AND PLACEMENT. GC TO COORDINATE INSTALLATION WITH SIGN SHOP DRAWINGS.
- C. GC TO COORDINATE DOWNSPOUTS WITH CIVIL DRAWINGS FOR STORM TIE-IN.
- D. GC TO COORDINATE EXTERIOR LIGHTING WITH SITE PHOTOMETRICS PLAN ON CIVIL DRAWINGS. GC TO NOTIFY ARCHITECT IMMEDIATELY IF ANY DISCREPANCIES.

**FINISH SCHEDULE**

CODE	PRODUCT NO./NAME	COLOR	NOTES
<b>PAINT</b>			
PEX-1	BRONZETONE CUSTOM COLORS, "MISSISSIPPI BRONZE"	DARK BRONZE	SEE PAINT SCHEDULE FOR ALT OPTIONS
PEX-6	WALK-IN COOLER / FREEZER - MATCHES PEX-1	PRE-FINISHED- DARK BRONZE	SEE PAINT SCHEDULE FOR ALT OPTIONS
PEX-12	SW 7674 "PEPERCORN"	DARK GRAY	SEE PAINT SCHEDULE FOR ALT OPTIONS

<b>STOREFRONT</b>			
SF-1	IT451/451	"DARK BRONZE" ANODIZED ALUMINUM	

<b>METALS</b>			
M-3	EXCEPTIONAL METALS - TWO PIECE COMPRESSION EDGE	PRE-FINISHED, "BRIGHT RED"	
M-4	EXCEPTIONAL METAL	MILL FINISH, "SILVER METALLIC"	
M-5	ALTERNATE FOR ACM-1	CLEAR ANODIZED	
M-7	EXCEPTIONAL METAL	MILL FINISH, "CHARCOAL GRAY"	

<b>EIFS SYSTEMS</b>			
E-2	SoTHERM ESSENCE NEXT SYSTEM	WENDY'S RED (STO #NA13-0040); SEE #ACM-1 FOR APPROVED ALTERNATE	
E-4	SoTHERM ESSENCE NEXT SYSTEM	FIELD BROWN (STO #NA14-0011)	
E-7	SoTHERM ESSENCE NEXT SYSTEM	DARK GREY (STO #NA18-0004)	

**EXTERIOR SIGNAGE SCHEDULE**

MARK	DESCRIPTION
AP-44	CREW DOOR DECAL
CA-54	INTERNALLY ILLUMINATED CAMEO 54"
DP-06	NON-ILLUMINATED DELIVERY PICKUP LETTER SIGN 6"
DR-08	NON-ILLUMINATED QIOR LETTER SIGN 8" (US AND CANADA MARKETS)

SITE NUMBER:	0000
BUILDING TYPE:	GLOBAL NEXT GEN 40
ASSET TYPE:	FREESTANDING
CLASSIFICATION:	NEW
OWNER:	COMPANY/FRANCHISE
BASE VERSION:	2024
UPGRADE CLASSIFICATION:	NEW BUILD
PROJECT YEAR:	2024
DESIGN TYPE:	GLOBAL NEXT GEN
GUIDELINE DRAWING RELEASE:	SEPTEMBER 2024

**Marc W Brundige, Architect**  
Linear Architecture LLC  
4436 Harvest Hill Rd.  
Dallas, TX 75244  
PHONE: 469-299-7056



Issue:	No:	Date:

**EXTERIOR ELEVATIONS - ENTIRE BUILDING - EIFS**

NOT FOR CONSTRUCTION

Marc w. Brundige  
ARCH #  
Proj #: 2024.XX Reviewed By:  
**A2.0c**  
NOT RELEASED FOR CONSTRUCTION

