

Do You Need Health Insurance?

Maryland Health Connection has opened an emergency special enrollment period for uninsured Marylanders. Medicaid enrollment is open any day if you qualify. Qualified health plan enrollment is extended until June 15 2020.

If you have no insurance, recently lost insurance, lost your job, had a reduction in hours or a change in income, call us now to learn about health insurance options available.

★ Seedco Navigators are working remotely, providing application assistance over the telephone. ★

For help in

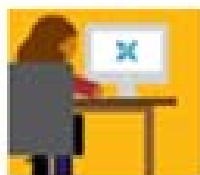
**Harford, Cecil, Kent, Queen Anne's, Caroline,
Talbot and Dorchester Counties,
Call the Seedco Hotline: 866-492-6057**

You will be directed to a Navigator who will work with you over the telephone.

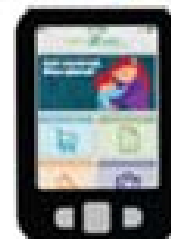
You can also get help in the following ways:

www.marylandhealthconnection.gov

on-line application



By Mobile App: Download our free mobile app, Enroll MHC! Upload documents right from your phone or tablet



By Phone:

Maryland Health Connection:
1-855-642-8572 M-F 8:00am – 6:00pm

